

Innovative Engineered Solutions



AVAILABLE FOR FLOW RATES

200 kg/hr upto 6,000 kg/hr
 ΔP : 100 mbar – 1 Bar

100%

QUALITY ASSURED

MVR | MVC MECHANICAL VAPOUR COMPRESSOR

EverestVacU_m a brand of Everest Blower Systems Private Limited brings to its customers, **Mechanical Vapour Recompessors MVR/MVC**, the latest and first of its kind Re-Compressor equipment in India offering simplicity, responsiveness and flexibility of operation.

These specially designed compressors are meant to handle steam vapours which can be reused to recover the latent heat of vaporization, in turn providing a heavy saving in energy and utilities. These compressors act as very efficient pollution-free alternatives to existing technologies. **MVR's** come in special corrosion resistance material of construction along with special high-speed PTFE compound seals which can withstand higher than normal temperature enough to ensure leak tightness to prevent any contamination of oil with process steam/vapours.

KEY FEATURES

- Ability to handle corrosive vapours and operate at high differential temperatures and pressure
- High coefficient of power leading to lower overall operating costs & cost of ownership
- Flexibility to scale up as per process requirement and adaptation to process constraints

SALIENT FEATURES

- Robust and Rugged Design
- 100% plug and play, consistent and reliable performance
- High Volumetric Efficiency
- Flexibility to adapt to existing parameters, scale-up, and adaptation to process constraints
- Many successful Installations
- Designed for high Operating temperatures

RANGE

- Pumping Speed: 200 kg/hr - 6000 kg/hr (single module), can be multiplied by adding similar modules
- ΔP : 100 mBar - 1000 mBar

SCOPE OF SUPPLY

- MVR/MVC Compressor
- SS 304 interconnecting piping
- Isolation Bellows with Flanges
- Desuperheating module (If, required)
- Flush Diaphragm Pressure Transmitter with Pressure Gauge
- Temperature Transmitter with Thermowell and Sensor at suction and discharge
- Oil conditioning system (Optional)
- Additional Collection pot (Optional)

APPLICATIONS

- Zero Liquid Discharge
- Chemical Industry
- Saline Industry
- Sugar Industry
- Dairy Industry
- Pulp Industry
- Brewing Industry
- Alcohol Industry and many more...

ENGINEERING | EVALUATION | DESIGNING **EverestVacU_m**
MANUFACTURING | TESTING | EXECUTION | POST SALES AND SERVICE

EVEREST PRODUCT RANGE

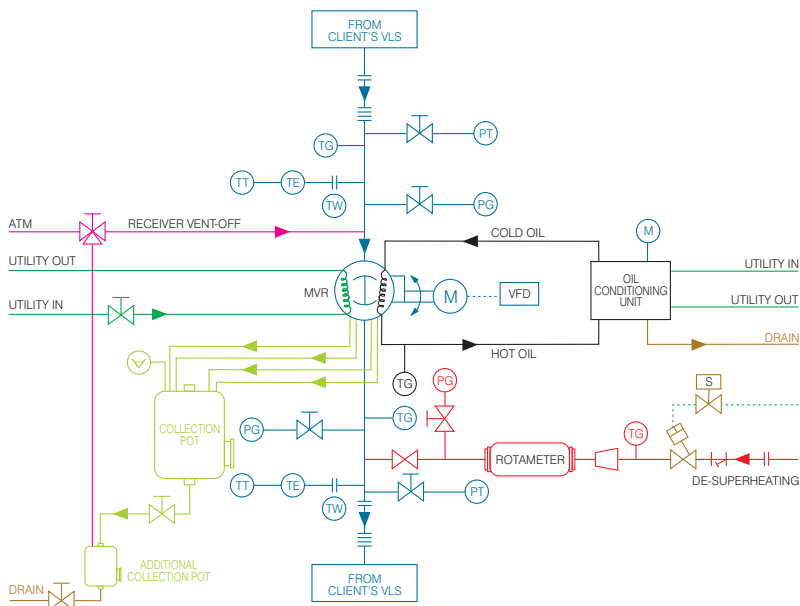
VACUUM

MECHANICAL VACUUM BOOSTERS
 DRY SCREW VACUUM PUMPS
 SUPERVAC
 ROTARY VANE VACUUM PUMP
 SUPERVANE
 VACUUM SYSTEMS (WET)
 ENGINEERED VACUUM SYSTEMS
 MECHANICAL VAPOUR RECOMPRESSOR (MVR|MVC)

PRESSURE

TWIN LOBE ROOTS BLOWERS
 TRI LOBE ROOTS BLOWERS
 CENTRIFUGAL BLOWERS
 TURBO BLOWERS
 BLOWER PACKAGES

P&I DIAGRAM



MVR|MVC MECHANICAL VAPOUR COMPRESSORS

SPECIFICATIONS

Capacity: 200 kg/hr - 6000 kg/hr (single module), can be multiplied by adding similar modules

ΔP: 100 mBar - 1000 mBar

Application Range: 50 mBar (abs.) to 2000 mBar (abs.)

Power: 5 Kw to 250 Kw

Sealing: PTFE compound double lip (VDHTPTFE) as primary and Labyrinth as secondary sealing

Coating: Corrosion resistance special coating and alloy steel construction on all internals and wetted parts for higher durability and longer life. (High wear resistance)

Our technology is so flexible, we can custom manufacture **Special Blowers, Vacuum Pumps & Systems** by alloying and cross linking diverse designs to suit individual requirements and import substitutes.



EVEREST
 PRESSURE & VACUUM SYSTEMS

Corporate Office: B 44, Mayapuri Industrial Area, Phase 1, New Delhi 110 064, India
 T: +91 11 4545 7777 | E: sales@everestvacuum.com

[f](#) [t](#) [Linked in](#) [e](#) www.everestvacuum.com

We don't just offer **Blowers, Boosters and Systems** we offer **SOLUTIONS !!**